

# Connections Newsletter



September  
2021

SERVING CHASE, DUNDY, FRONTIER, HAYES,  
HITCHCOCK & RED WILLOW COUNTIES

**Educational Service Unit No. 15**  
**344 Main St.—PO Box 398**  
**Trenton, NE 69044**

*“Educational Service Unit 15,  
as a partner with our area schools and  
communities, will provide leadership  
and services to support the improve-  
ment of teaching and learning.”*



**Paul Calvert, Administrator**

**Register for upcoming events**  
**[www.esu15.org](http://www.esu15.org)**

## Calendar of Events

Sept 6th	ESU 15 Offices Closed—Labor Day
Sept 15th	All School PLC-Mike Ruyle, Guest Speaker
Sept 20th	5TH/6TH Inclusive PLC—ESU 15 Trenton
Sept. 21st	4th Grade PLC-ESU 15-Trenton
Sept. 28th	3rd Grade PLC-ESU 15-Trenton
Oct. 5th	2nd Grade PLC-ESU 15-Trenton
Oct. 11th	1st Grade PLC-ESU 15-Trenton
Oct. 12th	Principal's Meeting-ESU 15-Trenton
Oct. 29th	Pre-K PLC-ESU 15-Trenton

### September is....

September is the 9th month of the year and has 30 days.

Season (Northern Hemisphere): Autumn Holidays

Labor Day~ Grandparents Day~ Patriot Day~ Constitution Day

Rosh Hashanah ~Talk Like a Pirate Day

National Hispanic Heritage Month (Sep 15 through Oct 15)

National Potato Month ~National Chicken Month

National Piano Month~National Biscuit Month

**Symbols of September** Birthstone: Sapphire Flower: Aster Zodiac signs: Virgo and Libra

**History:** September was the seventh month of the original Roman calendar. This is where it got its name which means seventh. Later, when January and February were added to the calendar it became the ninth month. When the British changed from the Julian calendar to the Gregorian calendar in 1752, they needed to adjust some days to get the seasons aligned with the months. They took 11 days from the month of September jumping directly from September 3rd to the 14th. Now it's as if the days between September 3 and 13 during 1752 never happened in British history.

Read more at: <https://www.ducksters.com/history/septemberinhistory.php>

## Bus Driver Training

The Nebraska Safety Center has scheduled Level I and II bus driver training, with Level II classes available via distance learning in some cases.



The classes are dependent on minimum enrollment so register at least seven days in advance on the Nebraska Safety Center website.

\*Please call 308-865-8256 for registration or for DL available sites.

## Administrator Notes

### ESU 15 2021-2022 Superintendent Meetings

September 14th

10 am - 2 pm

ESU 15 - Trenton

**A Time for Hope & Healing**  
With Zak Williams,  
Mental Health Advocate & Son of Late Comedian & Actor Robin Williams  
Luncheon & Keynote: Thursday, November 4, 2021  
11:30 a.m. to 1:00 p.m. at Embassy Suites La Vista Conference Center  




## ESU 15 All-School PLC Sept. 15th 8:30-3 E-Free Church(McCook) Dr. Mike Ruyle, Keynote Speaker



November 9 @ 8:00 am - 5:00 pm

[Younes Conference Center](#)  
416 W. Talmadge Rd.  
Kearney, NE 68845

2021 Nebraska Para-educator Conference  
(Hybrid – Virtual & In-Person)

Nebraska Digital Learning Association's  
20th Annual Conference

**YESTERDAY'S GONE**  
It'll be better than before!



November 11-12, 2021  
Lincoln, NE

[ndla.org](http://ndla.org) **NDLA**

# Professional Development

**Welcome Back to School to all of the ESU 15 area schools/administrators/teachers!**

**If your school needs any additional resources or trainings, please don't hesitate to contact Kelly Erickson at ESU 15!**

## Principal Meetings

October 12th

## \*\*Reminder\*\*

ESU 15 All-School PLC ~ September 15th  
McCook E-Free Church 8am—4pm

Featured speaker: Mike Ruyle

**Fall Ed Tech Conference November 1, 2021**

**Spring Conference April 21-22, 2022**



*Grade & Subject Specific PLC's start*

*September 20th (5th & 6th -inclusive)*

*See the ESU 15 Calendar for all upcoming dates!*

## Special Education News

# Central Region ASD Network

Check out ASD Network events on the webpage at:

<http://www.unl.edu/asdnetwork>

Find more information on trainings at the Central Team website:

<http://www.esu10.org/programs-services/special-education-services/Autism>



**2021 NATS/NATM Fall Conference**

**October 1 ~ SAVE THE DATE**

Younes Conference Center, Kearney, NE

Please join us for the joint Fall Conference for  
Nebraska teachers of  
Math (NATM) and Science (NATS).



**ESU 15 will serve as a host site for all ESU 15 school staff interested in this virtual conference  
October 7th & 8th.**

**Register at [www.esu15.org](http://www.esu15.org)**

# Early Childhood Planning Region Team 15



## Educational Service Unit 15

Administrator ~ Paul Calvert

### ~ESU 15 Board~

Kate Repass District 4 (President)

Allison Sandman, District 3 (Vice President)

Cheri Burke, District 1 (Secretary)



John Metzger, District 2

Don Remington, District 5

Larry Gossen District 6 ~ Jesse Stevens, District 7

Dennis Chipman, District 8 ~ Marty Conroy, District 9

Jason Loop, District 10



#### **ESU 15 Policy of**

#### **Non-Discrimination:**

*Educational Service Unit 15 does not discriminate on the basis of race, color, national origin, gender, marital status, disability, religion, or age in admission, access, or treatment with regard to its programs and activities or with regard to employment. Additionally, Educational Service Unit 15 does not discriminate on the basis of handicap in violation of State or Federal law, including Section 504.*

[« All Events](#)

# 2021 Nebraska Paraeducator Conference (Hybrid – Virtual & In-Person)

November 9 @ 8:00 am - 5:00 pm



32nd Annual Paraeducator Conference

The Link to Meaningful Connections

More information will be shared as it becomes available.

Do not hesitate to reach out to Jamie Chambers  
([Jamie.L.chambers@nebraska.gov](mailto:Jamie.L.chambers@nebraska.gov)) or Mary Lenser  
([Mary.lenser@nebraska.gov](mailto:Mary.lenser@nebraska.gov))  
for further information.

[+ GOOGLE CALENDAR](#)[+ ICAL EXPORT](#)

## Details

**Date:**

November 9 (2021-11-09)

**Time:**

8:00 am - 5:00 pm

**Event Categories:**

Conference, Special Education

## Venue

Younes Conference Center

416 W. Talmadge Rd.  
Kearney, NE  
(Nebraska) 68845  
United States

**Phone:**

308-234-7300





[« All Events](#)

# 2021 NeMTSS Summit “Essentials for Renewal & Acceleration”

October 7 @ 8:00 am - October 8 @ 5:00 pm \$25.00



Registration is open now for the 2021 Nebraska MTSS Summit on Oct. 7 and 8! “Essentials for Renewal and Acceleration” is the theme of this year’s all-virtual event, hosted by the Nebraska Department of Education’s Office of Special Education.

The cost is \$25 per registrant. The first 300 people to register will be sent a special “Essentials for Engagement” packet.

[Visit our website to learn more and register today!](#)

[+ GOOGLE CALENDAR](#)[+ ICAL EXPORT](#)

## Details

### Start:

October 7 @ 8:00 am  
(2021-10-07)

### End:

October 8 @ 5:00 pm  
(2021-10-08)

### Cost:

\$25.00

### Event Categories:

Conference, Special  
Education

## Venue

Virtual Conference

NE (Nebraska)

## Organizer



(<https://www.thekimfoundation.org>)

[Find Help \(https://www.thekimfoundation.org/by-location/\)](https://www.thekimfoundation.org/by-location/)

Suicide Lifeline:  
800.273.TALK (8255) (tel:18002738255)

[f \(https://www.facebook.com/thekimfoundation\)](https://www.facebook.com/thekimfoundation) [in \(https://www.linkedin.com/company/11406378/\)](https://www.linkedin.com/company/11406378/) [e \(https://www.thekimfoundation.org/blog/\)](https://www.thekimfoundation.org/blog/)

[Twitter \(https://twitter.com/kimfoundation\)](https://twitter.com/kimfoundation) [YouTube \(https://www.youtube.com/user/TheKimFoundation\)](https://www.youtube.com/user/TheKimFoundation)

[About Mental Illness](#) ▾ [Finding Help](#) ▾ [Community Outreach](#) ▾ [Suicide Prevention](#) ▾ [Get Involved](#) ▾ [Who We Are](#) ▾

[Contact Us \(https://www.thekimfoundation.org/contact-us/\)](https://www.thekimfoundation.org/contact-us/) [Annual Event \(https://www.thekimfoundation.org/annual-event/\)](https://www.thekimfoundation.org/annual-event/)

# A Time for Hope & Healing

## With Zak Williams,

Mental Health Advocate & Son of Late Comedian & Actor Robin Williams

Luncheon & Keynote: Thursday, November 4, 2021  
11:30 a.m. to 1:00 p.m. at Embassy Suites La Vista Conference Center

[DONATE \(https://www.thekimfoundation.org/donate/\)](https://www.thekimfoundation.org/donate/)

[NEWSLETTER \(https://www.thekimfoundation.org/newsletter/\)](https://www.thekimfoundation.org/newsletter/)

[EMERGENCY RESPONSE \(https://www.thekimfoundation.org/emergency-response/\)](https://www.thekimfoundation.org/emergency-response/)

[ANNUAL EVENT \(https://www.thekimfoundation.org/annual-event/\)](https://www.thekimfoundation.org/annual-event/)

A Supportive Resource and Compassionate  
Voice for Lives Touched by Mental Illness and  
Suicide.

*A Time for Hope & Healing 2021 with Zak Williams*

## Luncheon & Keynote

**When:** Thursday, November 4th, 2021

**Time:** 11:30am to 1:00pm

**Place:** Embassy Suites La Vista Conference Center

## Our Speaker

**Zak Williams,** Mental Health Advocate

[NEWSLETTER \(https://www.thekimfoundation.org/newsletter/\)](https://www.thekimfoundation.org/newsletter/)

[EMERGENCY RESPONSE \(https://www.thekimfoundation.org/emergency-response/\)](https://www.thekimfoundation.org/emergency-response/)

NEBRASKA SCHOOL MENTAL HEALTH  
CONFERENCE  
(<https://www.thekimfoundation.org/nebraska-school-mental-health/>)

al mental health advocate who focuses his time, expertise, and resources on sharing his personal story in campaigns seeking to remove the stigma and address the challenges and discrimination associated with mental illness. He is the founder of anxiety relief company PYM and is an investor in technology and consumer packaged goods.



companies. Formerly, he was COO of the recommendation platform Crossing Minds, the Director of Business Development for media company Condé Nast, and the marketing lead for gaming and media platform N3TWORK. Zak is a U.S. trustee of United for Global Mental Health and board member of mental health awareness and advocacy non-profit, Bring Change 2 Mind, founded by Glenn Close. He is an advisor for Inseparable, a national organization focused on creating pragmatic mental health policy and a board member for Yerba Buena Center of the Arts, where he focuses on guiding the organizations' strategy and business development initiatives. Zak received an MBA from Columbia Business School and a BA in Linguistics from New York University.

Registration and further details will be coming out soon!

---

Thank you to our 2020 sponsors!

PLATINUM

**BRIDGES | TRUST**

 **Northwestern Mutual®**  
**Harrison Financial Services**

---

SILVER



NEBRASKA SCHOOL MENTAL HEALTH  
CONFERENCE  
(<https://www.thekimfoundation.org/nebraska-school-mental-health/>)

NEWSLETTER  
(<https://www.thekimfoundation.org/newsletter/>)

EMERGENCY RESPONSE  
(<https://www.thekimfoundation.org/emergency-response/>)





Heider Family Foundation

**Medical  
Solutions™**



**valmont.**



---

WATCH PARTY



NEBRASKA SCHOOL MENTAL HEALTH  
CONFERENCE  
(<https://www.thekimfoundation.org/nebraska-school-mental-health/>)

NEWSLETTER  
(<https://www.thekimfoundation.org/newsletter/>)

EMERGENCY RESPONSE  
(<https://www.thekimfoundation.org/emergency-response/>)



NEBRASKA SCHOOL MENTAL HEALTH  
CONFERENCE  
(<https://www.thekimfoundation.org/nebraska-school-mental-health/>)

NEWSLETTER  
(<https://www.thekimfoundation.org/newsletter/>)

EMERGENCY RESPONSE  
(<https://www.thekimfoundation.org/emergency-response/>)



---

Previous Speakers:

2020 – Scarlett & JT Lewis  
2019 – Modern Warrior LIVE  
2018 – Patrick J Kennedy  
2017 – Mike Veny  
2016 – Dr. Thomas Joiner  
2015 – Kevin Briggs  
2014 – Mariel Hemingway  
2013 – Shane Lopez

**Email The Kim Foundation** (<mailto:info@thekimfoundation.org>) to be added to our email list so that you are notified for future A Time for Hope & Healing events.



(<https://www.thekimfoundation.org/>) (<https://www.thekimfoundation.org/>)  
(<https://www.thekimfoundation.org/one-year-later-still-working-from-home/>) (<https://www.thekimfoundation.org/mental-health-awareness-for-veterinarians/>) (<https://www.thekimfoundation.org/self-injury-help-is-available/>)

## About Mental Illness

By Illness & Population  
(<https://www.thekimfoundation.org/mental-illness/>)

Causes  
(<https://www.thekimfoundation.org/causes/>)

Recovery

(<https://www.thekimfoundation.org/recovery/>)

FAQs (<https://www.thekimfoundation.org/faqs/>)

## Finding Help

Emergency Response  
(<https://www.thekimfoundation.org/emergency-response/>)

By Location  
(<https://www.thekimfoundation.org/by-location/>)

Support Groups  
(<https://www.thekimfoundation.org/support-groups/>)

Local & National Resources  
(<https://www.thekimfoundation.org/local-national-resources/>)

Suicide Survivor Resources  
(<https://www.thekimfoundation.org/suicide-survivor-resources/>)

Suicide Attempt Survivor Resources  
(<https://www.thekimfoundation.org/suicide-attempt-survivor-resources/>)

## Community Outreach

More Tomorrows

(<https://www.thekimfoundation.org/more-tomorrows/>)

Metro Area LOSS Team  
(<https://www.thekimfoundation.org/metro-area-loss-team/>)

A Voice For Hope & Healing  
(<https://www.thekimfoundation.org/a-voice-for-hope-healing/>)

Metro Area Suicide Prevention Coalition  
(<https://www.thekimfoundation.org/metro-area-suicide-prevention-coalition/>)

Don't Be Sidelined  
(<https://www.thekimfoundation.org/dont-be-sidelined/>)

Nebraska School Mental Health  
(<https://www.thekimfoundation.org/nebraska-school-mental-health/>)

## Suicide Prevention

About Suicide

(<https://www.thekimfoundation.org/about-suicide/>)

Suicide Warning Signs  
(<https://www.thekimfoundation.org/suicide-warning-signs/>)

Suicide Risk & Protective Factors  
(<https://www.thekimfoundation.org/suicide-risk-protective-factors/>)

Starting the Conversation  
(<https://www.thekimfoundation.org/starting-the-conversation/>)

Suicide Facts  
(<https://www.thekimfoundation.org/suicide-facts/>)

Appropriate Language & Reporting  
(<https://www.thekimfoundation.org/appropriate-language-reporting/>)

Safeguarding Your Home  
(<https://www.thekimfoundation.org/safeguarding-your-home/>)

## Get Involved

Get Involved

(<https://www.thekimfoundation.org/get-involved/>)

Calendar of Events  
(<https://www.thekimfoundation.org/calendar-of-events/>)

Community Initiatives  
(<https://www.thekimfoundation.org/community-initiatives/>)

State & Federal Legislation  
(<https://www.thekimfoundation.org/state-federal-legislation/>)

Tagg  
(<https://www.thekimfoundation.org/tagg/>)

## Who We Are

Who We Are

(<https://www.thekimfoundation.org/who-we-are/>)

History

(<https://www.thekimfoundation.org/history/>)

Our Team

(<https://www.thekimfoundation.org/our-team/>)

In the News

(<https://www.thekimfoundation.org/in-the-news/>)

Press

## CONTACT US

(<https://www.thekimfoundation.org/contact-us/>)

## DONATE

(<https://www.thekimfoundation.org/donate/>)

## NEWSLETTER

(<https://www.thekimfoundation.org/newsletter/>)

## Connect With Us



Facebook

(<https://www.facebook.com/thekimfoundation/>)



LinkedIn

(<https://www.linkedin.com/company/114063>)



Twitter

(<https://twitter.com/kimfoundation>)



Blog

(<https://www.thekimfoundation.org/blog/>)



YouTube

(<https://www.youtube.com/user/TheKimFou>)

The Kim Foundation is an education and resource organization. We do not provide direct services and are not able to respond immediately to requests for information.

If you are in crisis and need immediate help, please call **1-800-273-TALK (8255) (tel:18002738255)** The content contained in this website is for informational purposes only and is compiled and received from various sources. The Kim Foundation does not endorse the resources provided and does not accept liability or responsibility for incorrect information provided.

©Copyright 2021 The Kim Foundation® | Privacy Policy (<https://www.thekimfoundation.org/privacy-policy/>)

NEWSLETTER

(<https://www.thekimfoundation.org/newsletter/>)

EMERGENCY RESPONSE

(<https://www.thekimfoundation.org/emergency-response/>)

NEBRASKA SCHOOL MENTAL HEALTH  
CONFERENCE

(<https://www.thekimfoundation.org/nebraska-school-mental-health/>)

# Nebraska Department of Education Training Schedule

Various Safety Trainings	Date	Registration or Times Available
Suicidal Behaviors Questionnaire-Revised (SBQ-R Training)	August 2, 2021	11:00 a.m. CDT or 1:00 p.m. CDT <a href="#">Registration link</a>
SBQ-R Training	September 9, 2021	10:00 a.m. CDT — <a href="#">Registration link</a>
Basic Threat Assessment Training	September 29 & 30, 2021	Register: <a href="#">Use this link</a>
PFA Training — 8:30 a.m. – 3:30 p.m. CST	Dates	Registration link: (Register your team)
PFA Level 1	September 8, 2021	<a href="#">Register here</a>
	December 8, 2021	
	March 9, 2022	
PFA Level 2	October 13, 2021	<a href="#">Register here</a>
	January 12, 2022	
	April 13, 2022	
PFA Level 3	November 10, 2021	<a href="#">Register here</a>
	February 9, 2022	
	May 11, 2022	

**Please note:** The goal of this training is to assist schools to build Psychological First Aid (PFA) support teams. PFA is the suggested component of the recovery process of your Emergency Operations Plan. The PFA response can help staff and students recover from a broad range of distressful reactions to crisis incidents. This training is designed for staff who have served or plan to serve on the Crisis Response team and is provided at no cost to schools.

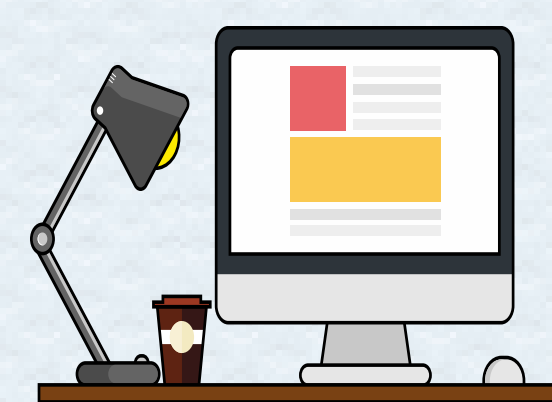




# Nebraska School Safety

## PSYCHOLOGICAL FIRST AID FOR SCHOOLS

### FREE LIVE VIRTUAL TRAINING



The goal of this training is to assist schools to build Psychological First Aid (PFA) support teams. PFA is the suggested component of the recovery process of your Emergency Operations Plan. The PFA response can help staff and students recover from a broad range of distressful reactions to crisis incidents.

This training is designed for teams to help strengthen their response and recovery process for hazards, threats, and incidents. PFA training is provided free to schools and ESUs.

#### Level 1

##### Session Content:

- Connection to the Safety Big Picture
- Incident Command System
- Initial Stages - responding to incidents, hazards, and threats
- Staff, Student, and Parent messaging
- PFA Core Actions 1 and 2



##### Dates:

(register your team for one date)

- June 9, 2021
- Sept. 8, 2021
- Dec. 8, 2021
- March 9, 2022

Training is 8:30 A.M.-3:30 P.M. CST  
All training is virtual.

#### Level 2

##### Session Content:

- Responsive stage of PFA - School and ESU teams
- PFA core actions 3-5
- Scenarios: practice PFA response and messaging



##### Dates:

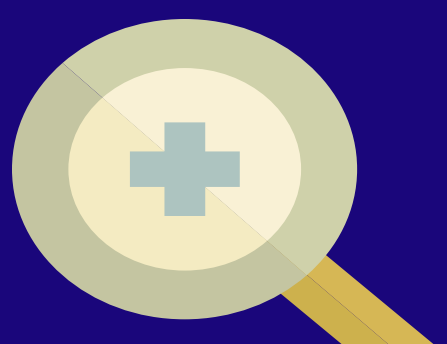
- June 10, 2021
- Oct. 13, 2021
- Jan. 12, 2022
- April 13, 2022

Training is 8:30 A.M.-3:30 P.M. CST  
All training is virtual.

#### Level 3

##### Session Content:

- Recovery stage of PFA - long term response
- PFA Core Actions 6-8
- Scenarios - Team Practice



##### Dates:

- Nov. 10, 2021
- Feb. 9, 2022
- May 11, 2022

Training is 8:30 A.M.-3:30 P.M. CST  
All training is virtual.

Register your team here or copy and paste to your browser:

[https://docs.google.com/forms/d/e/1FAIpQLSfTwCHRNldYIAImVC-3B2QN56A4ei8xy\\_DU8WkJQFc4yjrRLA/viewform](https://docs.google.com/forms/d/e/1FAIpQLSfTwCHRNldYIAImVC-3B2QN56A4ei8xy_DU8WkJQFc4yjrRLA/viewform)